

# CERTIFICATE OF ANALYSIS



Order #: 31409  
 Order Name: 1000mg ethanol  
 Oregon  
 Batch#: 1011  
 Received: 05/21/2019  
 Completed: 08/15/2019

Global Advanced Botanicals,  
 LLC/Advanced Therapy USA CBD, LLC  
 8310 SW 43rd Street  
 Miami Florida, 33155  
 (352) 455-0028  
 shamayah@aoi.com



## Sample



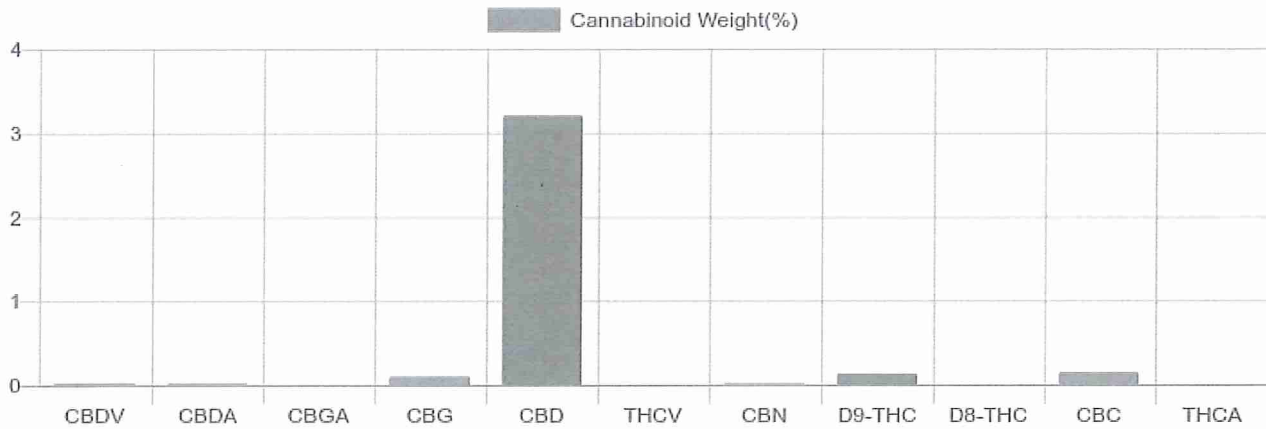
0.125% D9-THC	3.210% Total CBD
1,079.4 mg Cannabinoids per tincture	962.8 mg CBD per tincture

1 tincture = 30 ml per tincture x density (1) x  
 Cannabinoid concentration

## Cannabinoids Test

SHIMADZU INTEGRATED UPLC-PDA  
 GSL SOP 400      PREPARED: 05/22/2019 23:36:57      UPLOADED: 05/24/2019 20:21:40

Cannabinoids	LOQ	weight(%)	mg/g	mg/tincture
D9-THC	10 PPM	0.125%	1.249	37.5
THCA	10 PPM	N/D	N/D	N/D
CBD	10 PPM	3.201%	32.006	960.2
CBDA	20 PPM	0.010%	0.101	3.0
CBDV	20 PPM	0.016%	0.159	4.8
CBC	10 PPM	0.143%	1.434	43.0
CBN	10 PPM	0.006%	0.061	1.8
CBG	10 PPM	0.097%	0.970	29.1
CBGA	20 PPM	N/D	N/D	N/D
D8-THC	10 PPM	N/D	N/D	N/D
THCV	10 PPM	N/D	N/D	N/D
TOTAL D9-THC		0.125%	1.249	37.5
TOTAL CBD*		3.210%	32.095	962.8
TOTAL CANNABINOIDS		3.598%	35.980	1,079.4



Reporting Limit 10 ppm  
 \*Total CBD = CBD + CBDA x 0.877  
 N/D - Not Detected, B/LOQ - Below Limit of Quantification



4001 SW 47th Avenue Suite 207  
 Davie, FL 33314  
 1-833-TEST-CBD  
 info@greenscientificlabs.com



*Dr. Andrew Hall*  
 Dr. Andrew Hall, Ph.D., CSO & Lab Director

Green Scientific Labs uses its best efforts to deliver high quality results and to verify that the data contained therein are based on sound scientific judgment and levels listed are guidelines only and all data was reported based on standard laboratory procedures and deviations. However Green Scientific Labs makes no warranties or claims to that effect and further shall not be liable for any damage or misrepresentation that may result from the use or misuse of the data contained herein in any way. Further, Green Scientific Labs makes no claims regarding representations of the analyzed sample to the larger batch from which it was taken. Data and information in this report are intended solely for the individual(s) for whom samples were submitted and as part of our strict confidentiality policy, Green Scientific Labs can only discuss results with the original client of record.

# CERTIFICATE OF ANALYSIS



Order #: 31409  
 Order Name: 1000mg ethanol  
 Oregon  
 Batch#: 1011  
 Received: 05/21/2019  
 Completed: 08/15/2019

Global Advanced Botanicals,  
 LLC/Advanced Therapy USA CBD, LLC  
 8310 SW 43rd Street  
 Miami Florida, 33155  
 (352) 455-0028  
 shamayah@aol.com



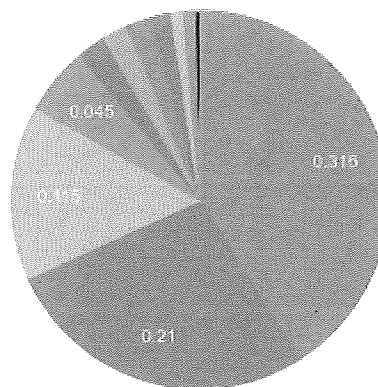
## TERPENES: TOTAL (0.771%)

Headspace GCMS - Shimadzu GCMS QP2020 with HS20

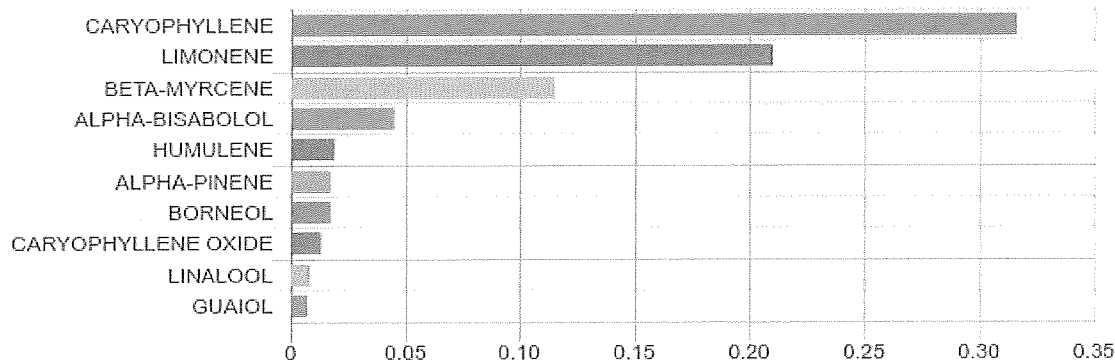
GSL SOP 404  
 Prepared: 05/22/2019 22:12:13  
 Uploaded: 05/23/2019 22:14:51

Terpene	Results (%)	LOQ (%)	LOD (%)
ALPHA-BISABOLOL	0.045%	0.0067%	0.0063%
ALPHA-PINENE	0.017%	0.0067%	0.0063%
BETA-MYRCENE	0.115%	0.0067%	0.0063%
BORNEOL	0.017%	0.0067%	0.0063%
CARYOPHYLLENE	0.316%	0.0067%	0.0063%
CARYOPHYLLENE OXIDE	0.013%	0.0067%	0.0063%
FENCHOL	B/LOQ	0.0067%	0.0063%
GUAIOL	0.007%	0.0067%	0.0063%
HUMULENE	0.019%	0.0067%	0.0063%
LIMONENE	0.210%	0.0067%	0.0063%
LINALOOL	0.008%	0.0067%	0.0063%

### Terpenes Breakdown



### Top Terpenes Results:



### Tested for but not present:

CAMPHENE, SABINENE, BETA-PINENE, ALPHA-PHELLANDRENE, 3-CARENE, ALPHA-TERPINENE, TRANS-BETA-OCIMENE, CIS-BETA-OCIMENE, EUCALYPTOL, GAMMA-TERPINENE, TERPINOLENE, SABINENE HYDRATE, FENCHONE, ISOPULEGOL, CAMPHOR, ISOBORNEOL, MENTHOL, TERPINEOL (MIX OF ISOMERS), GAMMA-TERPINEOL, NEROL, GERANIOL, PULEGONE, GERANYL ACETATE, ALPHA-CEDRENE, VALENCENE, CIS-NEROLIDOL, TRANS-NEROLIDOL, CEDROL



4001 SW 47th Avenue Suite 207  
 Davie, FL 33314  
 1-833-TEST-CBD  
 info@greenscientificlabs.com



Dr. Andrew Hall, Ph.D., CSO & Lab Director

Green Scientific Labs uses its best efforts to deliver high quality results and to verify that the data contained therein are based on sound scientific judgment and levels listed are guidelines only and all data was reported based on standard laboratory procedures and deviations. However Green Scientific Labs makes no warranties or claims to that effect and further shall not be liable for any damage or misrepresentation that may result from the use or misuse of the data contained herein in any way. Further, Green Scientific Labs makes no claims regarding representations of the analyzed sample to the larger batch from which it was taken. Data and information in this report are intended solely for the individual(s) for whom samples were submitted and as part of our strict confidentiality policy, Green Scientific Labs can only discuss results with the original client of record.

# CERTIFICATE OF ANALYSIS



Order #: 31409  
 Order Name: 1000mg ethanol  
 Oregon  
 Batch#: 1011  
 Received: 05/21/2019  
 Completed: 08/15/2019

Global Advanced Botanicals,  
 LLC/Advanced Therapy USA CBD,LLC  
 8310 SW 43rd Street  
 Miami Florida, 33155  
 (352) 455-0028  
 shamayachah@aol.com



## PESTICIDE ANALYSIS:

GSL SOP 401

PREPARED: 05/22/2019 21:37:43

UPLOADED: 05/23/2019 17:33:54

LCMS-MS - Shimadzu LCMS-8060

Pesticide	Action Level (ppm)	Results (ppm)	LOQ (ppm)	LOD (ppm)	Pesticide	Action Level (ppm)	Results (ppm)	LOQ (ppm)	LOD (ppm)
ABAMECTIN B1A	0.100	N/D	0.005	0.001	IMAZALIL	0.100	N/D	0.005	0.001
ACEPHATE	0.100	N/D	0.001	0.001	IMIDACLOPRID	5.000	N/D	0.005	0.001
ACEQUINOCYL	0.100	N/D	0.001	0.001	KRESOXIM-METHYL	0.100	N/D	0.010	0.005
ACETAMIPRID	0.100	N/D	0.005	0.001	MALATHION	0.500	N/D	0.005	0.001
ALDICARB	0.100	N/D	0.005	0.001	METALAXYL	2.000	N/D	0.001	0.001
AZOXYSTROBIN	0.100	N/D	0.001	0.001	METHIOCARB	0.100	N/D	0.005	0.001
BIFENAZATE	0.100	N/D	0.005	0.001	METHOMYL	1.000	N/D	0.001	0.001
BIFENTHRIN	3.000	0.015	0.005	0.001	MEVINPHOS	0.100	N/D	0.001	0.001
BOSCALID	0.100	N/D	0.005	0.001	MYCLOBUTANIL	0.100	N/D	0.005	0.001
CARBARYL	0.500	N/D	0.003	0.001	NALED	0.100	N/D	0.005	0.001
CARBOFURAN	0.100	N/D	0.001	0.001	OXAMYL	0.500	N/D	0.001	0.001
CHLORANTRANILIPROLE	10.000	N/D	0.005	0.005	PACLOBUTRAZOL	0.100	N/D	0.005	0.001
CHLORPYRIFOS	0.100	N/D	0.001	0.001	PERMETHRINS	0.500	N/D	0.005	0.001
CLOFENTEZINE	0.100	N/D	0.001	0.001	PHOSMET	0.100	N/D	0.005	0.001
DAMINOZIDE	0.100	N/D	0.005	0.001	PIPERONYL	3.000	N/D	0.001	0.001
DIAZANON	0.100	N/D	0.001	0.001	BUTOXIDE				
DICHLORVOS	0.100	N/D	0.005	0.001	PRALLETHRIN	0.100	N/D	0.005	0.005
DIMETHOATE	0.100	N/D	0.001	0.001	PROPICONAZOLE	0.100	N/D	0.010	0.005
DIMETHOMORPH	2.000	N/D	0.005	0.001	PROPOXUR	0.100	N/D	0.001	0.001
ETHOPROPHOS	0.100	N/D	0.001	0.001	PYRETHRINS				
ETOFENPROX	0.100	N/D	0.001	0.001	(PYRETHRIN I)	0.500	N/D	0.005	0.005
ETOXAZOLE	0.100	N/D	0.010	0.005	PYRIDABEN	0.100	N/D	0.005	0.001
FENHEXAMID	0.100	N/D	0.005	0.001	SPINETORAM	0.100	N/D	0.001	0.001
FENOXYCARB	0.100	N/D	0.005	0.001	SPINOSAD	0.100	N/D	0.001	0.001
FENPYROXIMATE	0.100	N/D	0.001	0.001	SPIROMESIFEN	0.100	N/D	0.005	0.001
FIPRONIL	0.100	N/D	0.003	0.001	SPIROTETRAMAT	0.100	N/D	0.001	0.001
FLONICAMID	0.100	N/D	0.025	0.010	SPIROXAMINE	0.100	N/D	0.001	0.001
FLUDIOXONIL	0.100	N/D	0.003	0.001	TEBUCONAZOLE	0.100	N/D	0.005	0.001
HEXYTHIAZOX	0.100	N/D	0.005	0.001	THIACLOPRID	0.100	N/D	0.001	0.001
					THIAMETHOXAM	5.000	N/D	0.001	0.001
					TRIFLOXYSTROBIN	0.100	N/D	0.001	0.001

N/D = Not Detected, A/LOQ = Above LOQ Level, B/LOQ = Below LOQ Level, B/LOD = Below LOD Level



4001 SW 47th Avenue Suite 207  
 Davie, FL 33314  
 1-833-TEST-CBD  
 info@greenscientificlabs.com



*Andrew Hall*  
 Dr. Andrew Hall, Ph.D., CSO & Lab Director

Green Scientific Labs uses its best efforts to deliver high quality results and to verify that the data contained therein are based on sound scientific judgment and levels listed are guidelines only and all data was reported based on standard laboratory procedures and deviations. However Green Scientific Labs makes no warranties or claims to that effect and further shall not be liable for any damage or misrepresentation that may result from the use or misuse of the data contained herein in any way. Further, Green Scientific Labs makes no claims regarding representations of the analyzed sample to the larger batch from which it was taken. Data and information in this report are intended solely for the individual(s) for whom samples were submitted and as part of our strict confidentiality policy, Green Scientific Labs can only discuss results with the original client of record.

# CERTIFICATE OF ANALYSIS



Order #: 31409  
Order Name: 1000mg ethanol  
Oregon  
Batch#: 1011  
Received: 05/21/2019  
Completed: 08/15/2019

Global Advanced Botanicals,  
LLC/Advanced Therapy USA CBD,LLC  
8310 SW 43rd Street  
Miami Florida, 33155  
(352) 455-0028  
shamayachah@aol.com



## Heavy Metals Analysis:

ICP-MS - Shimadzu ICPMS-2030  
GSL SOP 403

Uploaded: 05/24/2019 00:27:11

Metal	Action Level (ppb)	Result (ppb)
ARSENIC (AS)	200	B/LOQ
CADMIUM (CD)	200	B/LOQ
MERCURY (HG)	100	B/LOQ
LEAD (PB)	500	B/LOQ

Lower Limit of Quantitation (LOQ) is 75 ppb

## Microbial Analysis:

Microbial Analysis GSL SOP 406

Uploaded: 05/27/2019 17:54:37

Test	Test Method Used	Device Used	LOD	Allowable Criteria	Actual Result	Pass/Fail
YEAST AND MOLD	USP 61/62†	ARIAMX PCR	363.05518 CFU/G**	1,000	BELOW THRESHOLD	PASS

† USP 61 (enumeration of bacteria TAC, TYM, and ENT/Coliform), USP 62 (identifying specific species E.coli Aspergillus etc)

\*\* CFU/g Calculation based on Select Category Type Gummy MIP/Extract Flower matrix



4001 SW 47th Avenue Suite 207  
Davie, FL 33314  
1-833-TEST-CBD  
info@greenscientificlabs.com



Dr. Andrew Hall, Ph.D., CSO & Lab Director

Green Scientific Labs uses its best efforts to deliver high quality results and to verify that the data contained therein are based on sound scientific judgment and levels listed are guidelines only and all data was reported based on standard laboratory procedures and deviations. However Green Scientific Labs makes no warranties or claims to that effect and further shall not be liable for any damage or misrepresentation that may result from the use or misuse of the data contained herein in any way. Further, Green Scientific Labs makes no claims regarding representations of the analyzed sample to the larger batch from which it was taken. Data and information in this report are intended solely for the individual(s) for whom samples were submitted and as part of our strict confidentiality policy, Green Scientific Labs can only discuss results with the original client of record.