

CERTIFICATE OF ANALYSIS

ISO/IEC 17025:2017 ACCREDITATION #103104



Order #: 79502
 Order Name: lifter
 Batch#: 002
 Received: 06/21/2021
 Completed: 06/22/2021

Sample



0.236%
D9-THC

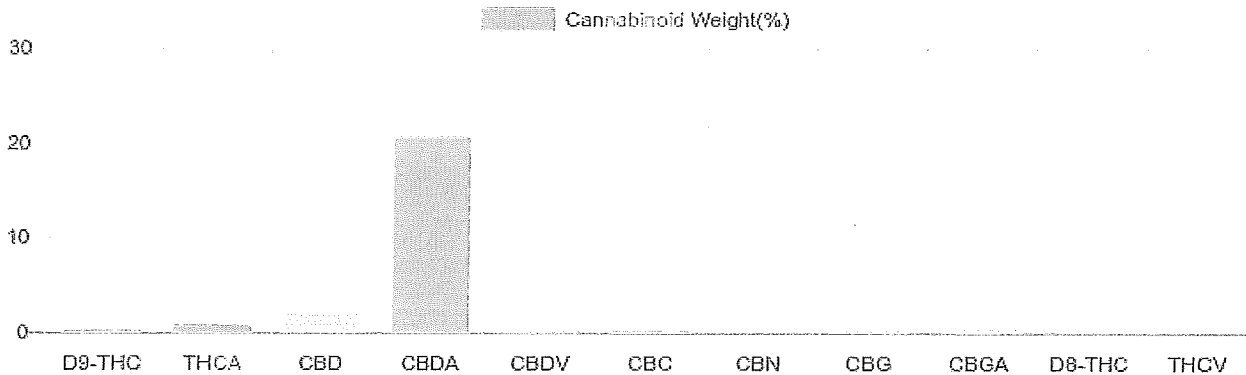
19.985%
Total CBD

Cannabinoids Test

SHIMADZU INTEGRATED UPLC-PDA
 GSL SOP 400

UPLOADED: 06/22/2021 09:34:40

Cannabinoids	LOQ	weight(%)	mg/g
D9-THC	10 PPM	0.236%	2.361
THCA	10 PPM	0.679%	6.795
CBD	10 PPM	1.931%	19.309
CBDA	20 PPM	20.586%	205.858
CBDV	20 PPM	0.061%	0.610
CBC	10 PPM	0.153%	1.533
CBN	10 PPM	N/D	N/D
CBG	10 PPM	0.067%	0.674
CBGA	20 PPM	0.369%	3.686
D8-THC	10 PPM	N/D	N/D
THCV	10 PPM	N/D	N/D
TOTAL D9-THC		0.236%	0.236%
TOTAL CBD*		19.985%	199.846
TOTAL CANNABINOIDS		24.363%	243.630



Reporting Limit 10 ppm
 *Total CBD = CBD + CBDA x 0.877
 N/D - Not Detected, B/LOQ - Below Limit of Quantification

Dr. Andrew Hall, Ph.D., Chief Scientific Officer

Ben Witten, MS, MT., Lab Director

Green Scientific Labs
 info@greenscientificlabs.com
 1-833 TEST CBD



Green Scientific Labs uses its best efforts to deliver high quality results and to verify that the data contained therein are based on sound scientific judgment and levels listed are guidelines only and all data was reported based on standard laboratory procedures and deviations. However Green Scientific Labs makes no warranties or claims to that effect and further shall not be liable for any damage or misrepresentation that may result from the use or misuse of the data contained herein in any way. Further, Green Scientific Labs makes no claims regarding representations of the analyzed sample to the larger batch from which it was taken. Data and information in this report are intended solely for the individual(s) for whom samples were submitted and as part of our strict confidentiality policy, Green Scientific Labs can only discuss results with the original client of record.

CERTIFICATE OF ANALYSIS

ISO/IEC 17025:2017 ACCREDITATION #103104



Order #: 79502
 Order Name: lifter
 Batch#: 002
 Received: 06/21/2021
 Completed: 06/22/2021

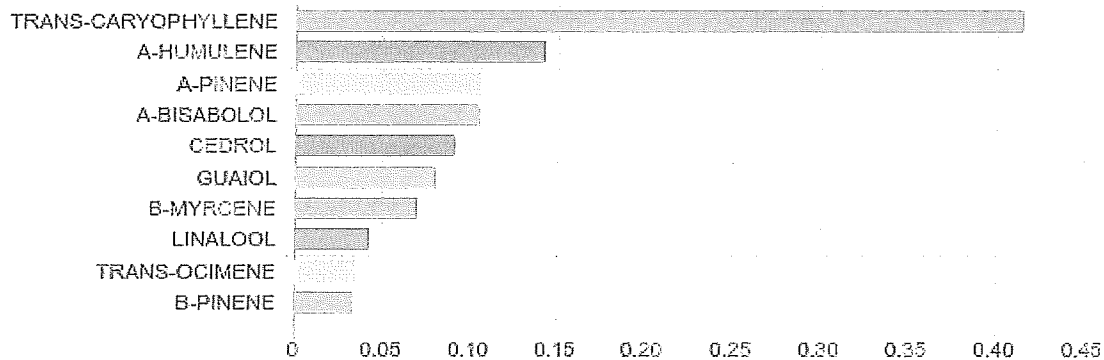
TERPENES: TOTAL (1.261%)

GSL SOP 404
 Uploaded: 06/22/2021 11:07:48

Headspace GCMS - Shimadzu GCMS QP2020 with HS20

Terpene	Results (%)	LOQ (%)	LOD (%)	Terpene	Results (%)	LOQ (%)	LOD (%)
3-CARENE	B/LOQ	0.003%	0.001%	GERANIOL	B/LOQ	0.003%	0.001%
A-BISABOLOL	0.105%	0.003%	0.001%	GERANYL ACETATE	0.010%	0.003%	0.001%
A-CEDRENE	B/LOQ	0.003%	0.001%	GUAIOL	0.080%	0.003%	0.001%
A-HUMULENE	0.143%	0.003%	0.001%	HEXAHYDROTHYMOL	B/LOQ	0.003%	0.001%
A-PINENE	0.106%	0.003%	0.001%	ISOBORNEOL	B/LOQ	0.003%	0.001%
A-TERPINENE	B/LOQ	0.003%	0.001%	ISOPULEGOL	B/LOQ	0.003%	0.001%
B-MYRCENE	0.070%	0.003%	0.001%	LIMONENE	0.034%	0.003%	0.001%
B-PINENE	0.034%	0.003%	0.001%	LINALOOL	0.043%	0.003%	0.001%
BORNEOL (MIX OF ISOMERS)	0.009%	0.003%	0.001%	NEROL	B/LOQ	0.003%	0.001%
CAMPHENE	0.005%	0.003%	0.001%	P-MENTHA-1, 5-DIENE	B/LOQ	0.003%	0.001%
CAMPHOR (MIX OF ISOMERS)	B/LOQ	0.003%	0.001%	PULEGONE (+)	B/LOQ	0.003%	0.001%
CARYOPHYLLENE OXIDE	0.027%	0.003%	0.001%	SABINENE HYDRATE	B/LOQ	0.003%	0.001%
CEDROL	0.091%	0.003%	0.001%	TERPINEOL (MIX OF ISOMERS)	0.026%	0.003%	0.001%
CIS-NEROLIDOL	B/LOQ	0.003%	0.001%	TERPINOLENE	B/LOQ	0.003%	0.001%
CIS-OCIMENE	B/LOQ	0.003%	0.001%	TRANS-CARYOPHYLLENE	0.415%	0.003%	0.001%
ENDO-FENCHYL ALCOHOL	0.011%	0.003%	0.001%	TRANS-NEROLIDOL	0.015%	0.003%	0.001%
EUCALYPTOL	B/LOQ	0.003%	0.001%	TRANS-OCIMENE	0.035%	0.003%	0.001%
FENCHONE (MIX OF ISOMERS)	B/LOQ	0.003%	0.001%	VALENCENE	B/LOQ	0.003%	0.001%
GAMMA-TERPINENE	B/LOQ	0.003%	0.001%				

Top Terpenes Results:



Dr. Andrew Hall, Ph.D., Chief Scientific Officer

Ben Witten, MS, MT., Lab Director

Green Scientific Labs
 info@greenscientificlabs.com
 1-833 TEST CBD



Green Scientific Labs uses its best efforts to deliver high quality results and to verify that the data contained therein are based on sound scientific judgment and levels listed are guidelines only and all data was reported based on standard laboratory procedures and deviations. However Green Scientific Labs makes no warranties or claims to that effect and further shall not be liable for any damage or misrepresentation that may result from the use or misuse of the data contained herein in any way. Further, Green Scientific Labs makes no claims regarding representations of the analyzed sample to the larger batch from which it was taken. Data and information in this report are intended solely for the individual(s) for whom samples were submitted and as part of our strict confidentiality policy, Green Scientific Labs can only discuss results with the original client of record.

CERTIFICATE OF ANALYSIS

ISO/IEC 17025:2017 ACCREDITATION #103104



Order #: 79502
Order Name: lifter
Batch#: 002
Received: 06/21/2021
Completed: 06/22/2021

Moisture Analysis:

Shimadzu MOC63U Moisture Balance - GSL SOP 411

Uploaded: 06/21/2021 17:49:50

Moisture %

13%

A handwritten signature in black ink, appearing to read "Andrew Hall".

Dr. Andrew Hall, Ph.D., Chief Scientific Officer

A handwritten signature in black ink, appearing to read "Ben Witten".

Ben Witten, MS, MT., Lab Director

Green Scientific Labs
info@greenscientificlabs.com
1-833 TEST CBD



Green Scientific Labs uses its best efforts to deliver high quality results and to verify that the data contained therein are based on sound scientific judgment and levels listed are guidelines only and all data was reported based on standard laboratory procedures and deviations. However Green Scientific Labs makes no warranties or claims to that effect and further shall not be liable for any damage or misrepresentation that may result from the use or misuse of the data contained herein in any way. Further, Green Scientific Labs makes no claims regarding representations of the analyzed sample to the larger batch from which it was taken. Data and information in this report are intended solely for the individual(s) for whom samples were submitted and as part of our strict confidentiality policy, Green Scientific Labs can only discuss results with the original client of record.