

Customer Sample ID: Del 8 25201
Laboratory Number: 20G0132-567



Cannabinoid Profile

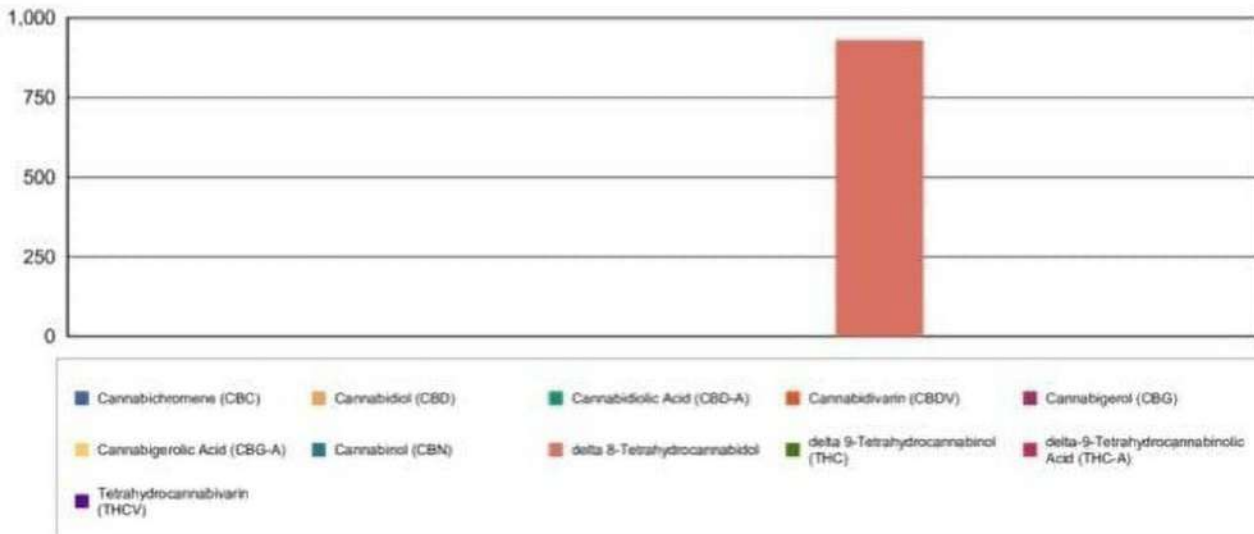
Extraction Technician: DF
Analytical Chemist: SH

Extraction Date(s)	Analysis Date(s)
8/25/2020	8/25/2020

Cannabinoids (HPLC)		Results	
	LOD (mg/g)	%	mg/g
Cannabidivarin (CBDV)	<0.20		
Cannabidiolic Acid (CBD-A)	<0.20		
Cannabigerolic Acid (CBG-A)	<0.20		
Cannabigerol (CBG)	<0.20		
Cannabidiol (CBD)		0.03	0.340
Tetrahydrocannabivarin (THCV)	<0.20		
Cannabinol (CBN)	<0.20		
delta 9-Tetrahydrocannabinol (THC)	<0.20		
delta 8-Tetrahydrocannabidol		93.14	931
Cannabichromene (CBC)	<0.20		
delta-9-Tetrahydrocannabinolic Acid (THC-A)	<0.20		
Cannabinoids Total		%	mg/g
Max Active THC		0.00	0.00
Max Active CBD		0.03	0.34
T.Active Cannabinoids		0.03	0.34
Total Cannabinoids		93.20	932.00

Following USDA guidelines on uncertainty, Altitude Consulting's uncertainty are calculated for CBDa and CBD at +/- 4%. The uncertainty for THCa and THC are +/- 5%. This implies the range for a 10% value of CBD to be 9.6-10.4%. The uncertainty range for a 0.30% value of THC would be 0.28-0.32%.

Cannabinoid (mg/g)



Reporting Limits will vary based on sample extraction weight used for the analysis.

Altitude Consulting, LLC utilizes NIST traceable Reference Standards and Certified Reference Material to calibrate analytical instruments along with proven analytical methods. The methods are applied in the most ethical manner following good laboratory practice guidelines. The results of this report are based solely on the sample submitted and cannot be reproduced.

Certificate of Analysis

0.17%	16.36%	19.30%
$\Delta 9$ THC	Total CBD	Total Cannabinoid
Not Tested	Pass	193.0
Water Activity	8.22 Moisture	mg/g Total Cannabinoids



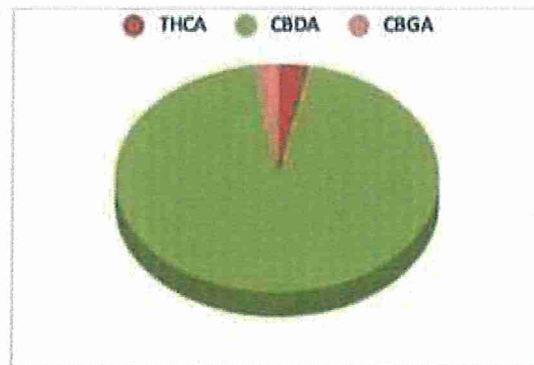
Sample ID: 21050670406
 Matrix: Flower
 Metric:
 Harvest/Prod Date:
 Report Created: 05/07/2021

Results Valid Until: 05/07/2022

Sample Extracted
 05/07/2021 11:01


Sample Analyzed
 05/07/2021 14:30

Cannabinoids	%Weight	mg/gram	LOQ(% w/w)
$\Delta 9$ THC	0.17	1.7	0.08
THCA	0.43	4.3	0.08
CBDA	16.30	163.0	0.08
CBD	1.90	19.0	0.08
CBN	0.00	0.0	0.08
‡ $\Delta 8$ THC	0.00	0.0	0.08
‡ CBC	0.12	1.2	0.08
‡ CBGA	0.37	3.7	0.08
‡ CBG	0.00	0.0	0.08



Total THC and Total CBD are calculated values per OAR 333-064-0100. Cannabinoid values for plant matter samples are reported on a dry weight basis. Water activity action level is 0.65Aw. LOQ= Limit of Quantitation. NR=Not Reported 0.00 = Not Detected above LOQ

Rogue Research Lab LLC
 218 E. Main Street, Rogue River, OR 97537
 Tel: 541-582-1962
 ORELAP 4107 OLCC 101050708B
rogue-researchlab.com


 Craig Berry - Lab Director



ROGUE RESEARCH LAB

Results pertain to submitted samples only. Rogue Research Lab LLC makes no claims as to the consumer safety or other risks associated with any detected or non-detected amounts of any pesticides, solvents or other adulterants. This report shall not be reproduced, unless in its entirety, without written approval from Rogue Research Lab LLC. Samples were received in good condition and all QC samples met acceptance criteria of the method; data available upon request. Analytes accompanied by dagger (‡) are not within the scope of accreditation and are for informational purposes only.