





PRODUCT SPECIFICATION:

PLRXSGFSWH - Full Spectrum Whole Hemp Extract Softgels (25 mg)

Description

Full Spectrum Whole Hemp Extract Softgels (25 mg) is an ingestible personal care finished product. Cannabinoids used in this product are extracted from Federally Compliant, USA Grown Industrial Hemp in accordance with the United States Department of Agriculture.

Cannabinoid Profile

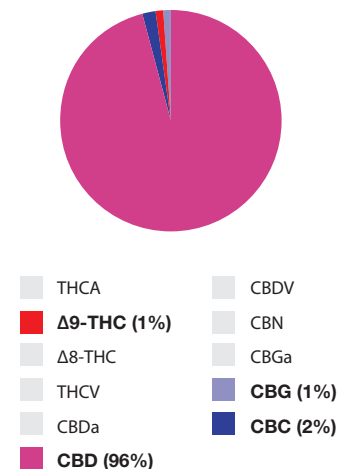
Cannabinoid	Specification			Minimum		Maximum	
	LOQ (%)	Weight (%)	(mg/unit)	Weight (%)	(mg/unit)	Weight (%)	(mg/unit)
 THCA	0.010	< LOQ	< LOQ	< LOQ	< LOQ	< LOQ	< LOQ
 Δ9-THC	0.010	0.086	0.30	0.095	0.27	0.094	0.33
 Δ8-THC	0.010	< LOQ	< LOQ	< LOQ	< LOQ	< LOQ	< LOQ
 THCV	0.010	< LOQ	< LOQ	< LOQ	< LOQ	< LOQ	< LOQ
 CBDa	0.010	< LOQ	< LOQ	< LOQ	< LOQ	< LOQ	< LOQ
 CBD	0.010	6.857	24.00	6.171	21.60	7.542	26.40
 CBDV	0.010	< LOQ	< LOQ	< LOQ	< LOQ	< LOQ	< LOQ
 CBN	0.010	< LOQ	< LOQ	< LOQ	< LOQ	< LOQ	< LOQ
 CBGa	0.010	< LOQ	< LOQ	< LOQ	< LOQ	< LOQ	< LOQ
 CBG	0.010	0.071	0.25	0.063	0.23	0.078	0.28
 CBC	0.010	0.128	0.45	0.115	0.41	0.141	0.50
MAX THC		< LOQ	< LOQ	< LOQ	< LOQ	< LOQ	< LOQ
MAX CBD		6.857	24.00	6.645	21.60	8.122	26.40
TOTAL ACTIVE		7.143	25.00	6.428	22.50	7.857	27.50

LOQ = Limit of Quantitation | Max THC = THCa* 0.877 + Δ9-THC + Δ8-THC | Max CBD = CBDa* 0.877 + CBD | Unit = 0.350 g

General Information

Item Code:	FSWHSG25
Country of Origin:	USA
Organic Certification:	Not Certified
Cannabinoid Concentrate(s):	Full Spectrum Whole Hemp Extract
Carrier Oil:	Coconut Oil (MCT)
Flavor Agents:	N/A
Container:	175 cc HPDE pill packer
Closure:	33-400 CRC cap with pressure-sensitive liner
Typical Batch ID (format):	FWSG220210S25

Cannabinoid Distribution



Application and Use	Consumer product formulation finished product manufactured in accordance with all applicable laws and regulations.
Composition	7.14% cannabinoids by weight, 92.86% other ingredients
Ingredients	Coconut Oil (MCT), Sunflower Lecithin, Sorbic Acid, Beta-Caryophyllene, Full Spectrum Distillate, Gelatin, Vegetable Glycerin, Water
Storage and Shelf Life	18 months from date of production when stored in original packaging in a cool, dark and dry location.
Irradiation, ETO, and Sewage Sludge	No ionizing radiation, ethylene oxide, sewage, or sludge is used in the manufacturing process.
Residual Solvents	No solvents are used in the manufacturing process. Any residual solvents in cannabinoid concentrates have been reduced by the manufacturing process to levels below those defined in (NRS) 557.
Pesticides	No pesticides are used in the manufacturing process. All materials are tested for pesticide residues and meet the specifications of (NRS) 557.
Food Allergens	No known food allergens are used in the manufacturing process.
GRAS Status	This product is generally regarded as safe.
Appearance	Dark gold tinted oval softgel capsule (oval 16 size)

Cannabinoids Assay

Cannabinoid Potency - Testing Methods: HPLC, UPLC, SFC		
Cannabidiol (CBD)	LOQ: 0.010%	Specification: +/- 7.1% (~24 mg/unit)
Tetrahydrocannabinol (Δ^9-THC)	LOQ: 0.010%	Specification: +/- 0.09% (<1 mg/unit)
Tetrahydrocannabinolic Acid (THCa)	LOQ: 0.010%	Specification: <LOQ%
Cannabigerol (CBG)	LOQ: 0.010%	Specification: +/- 0.07% (<1 mg/unit)
Cannabidiolic Acid (CBDa)	LOQ: 0.010%	Specification: <LOQ%
Tetrahydrocannabivarin (THCV)	LOQ: 0.010%	Specification: <LOQ%
Cannabichromene (CBC)	LOQ: 0.010%	Specification: +/- 0.13% (<1 mg/unit)
Cannabinol (CBN)	LOQ: 0.010%	Specification: <LOQ%
Delta-8-Tetrahydrocannabinol (Δ^8-THC)	LOQ: 0.010%	Specification: <LOQ%
Cannabigerolic Acid (CBGa)	LOQ: 0.010%	Specification: <LOQ%
Cannabidivarin (CBDV)	LOQ: 0.010%	Specification: <LOQ%

Heavy Metals Assay

Arsenic	LOQ: 136.761 PPB	Specification: <LOQ%
Cadmium	LOQ: 136.761 PPB	Specification: <LOQ%
Lead	LOQ: 136.761 PPB	Specification: <LOQ%
Mercury	LOQ: 136.761 PPB	Specification: <LOQ%

Microbials Assay

Coliforms	Specification: < 1,000 CFU/g	Aerobic Bacteria	Specification: Not Detected
Total Yeasts & Molds	Specification: <1,000 CFU/g	Powdery Mildew	Specification: Not Detected
STEC E. coli	Specification: Not Detected	Aspergillus niger	Specification: Not Detected
Salmonella	Specification: Not Detected	Aspergillus flavus	Specification: Not Detected

Mycotoxins Assay

Aflatoxins	LOQ: 5.00 PPB	Specification: <LOQ%
Ochratoxin A	LOQ: 5.00 PPB	Specification: <LOQ%

Residual Solvents Assay

1,4 Dioxane	LOQ: 100 PPM	Spec: <LOQ%	Pentanes	LOQ: 500 PPM	Spec: <LOQ%
2-Butanol	LOQ: 500 PPM	Spec: <LOQ%	n-Pentane	LOQ: 500 PPM	Spec: <LOQ%
2-Ethoxy-Ethanol	LOQ: 100 PPM	Spec: <LOQ%	Isopentane	LOQ: 500 PPM	Spec: <LOQ%
2-Propanol IPA	LOQ: 500 PPM	Spec: <LOQ%	Neopentane	LOQ: 500 PPM	Spec: <LOQ%
Acetone	LOQ: 500 PPM	Spec: <LOQ%	Butanes	LOQ: 500 PPM	Spec: <LOQ%
Acetonitrile	LOQ: 100 PPM	Spec: <LOQ%	n-Butane	LOQ 500 PPM	Spec: <LOQ%
Benzene Cumene	LOQ: 1 PPM	Spec: <LOQ%	Isobutane	LOQ: 500 PPM	Spec: <LOQ%
Cyclohexane	LOQ: 50 PPM	Spec: <LOQ%	Hexanes	LOQ: 50 PPM	Spec: <LOQ%
Dichloromethane	LOQ: 500 PPM	Spec: <LOQ%	n-Hexane	LOQ: 50 PPM	Spec: <LOQ%
Ethyl-Acetate	LOQ: 100 PPM	Spec: <LOQ%	2-Methyl-Pentane	LOQ: 50 PPM	Spec: <LOQ%
Ethyl-Ether	LOQ: 500 PPM	Spec: <LOQ%	3-Methyl-Pentane	LOQ: 50 PPM	Spec: <LOQ%
Ethylene-Glycol	LOQ: 500 PPM	Spec: <LOQ%	2,2-Dimethyl-Butane	LOQ: 50 PPM	Spec: <LOQ%
Ethylene Oxide	LOQ: 300 PPM	Spec: <LOQ%	2,3-Dimethyl-Butane	LOQ: 50 PPM	Spec: <LOQ%
Heptane	LOQ: 20 PPM	Spec: <LOQ%	Xylenes	LOQ: 300 PPM	Spec: <LOQ%
Isopropyl-Acetate	LOQ: 500 PPM	Spec: <LOQ%	m-Xylene	LOQ: 300 PPM	Spec: <LOQ%
Methanol	LOQ: 500 PPM	Spec: <LOQ%	o-Xylene	LOQ: 300 PPM	Spec: <LOQ%
Propane	LOQ: 100 PPM	Spec: <LOQ%	p-Xylene	LOQ: 300 PPM	Spec: <LOQ%
Terahydrofuran	LOQ: 500 PPM	Spec: <LOQ%	Ethyl-Benzene	LOQ: 300 PPM	Spec: <LOQ%
Tolulene	LOQ: 100 PPM	Spec: <LOQ%			

Pesticides Assay

Abamectin	LOQ: 1.00 PPM	Spec: <LOQ%	Fludioxonil	LOQ: 1.00 PPM	Spec: <LOQ%
Acequinocyl	LOQ: 0.50 PPM	Spec: <LOQ%	Imidacloprid	LOQ: 1.00 PPM	Spec: <LOQ%
Bifenazate	LOQ: 1.00 PPM	Spec: <LOQ%	Mycobutanil	LOQ: 1.00 PPM	Spec: <LOQ%
Bifenthrin	LOQ: 1.00 PPM	Spec: <LOQ%	Paclobutrazol	LOQ: 1.00 PPM	Spec: <LOQ%
Cyfluthrin	LOQ: 0.30 PPM	Spec: <LOQ%	Piperonyl Butoxide	LOQ: 0.50 PPM	Spec: <LOQ%
Cypermethrin	LOQ: 1.00 PPM	Spec: <LOQ%	Pyrethins	LOQ: 0.50 PPM	Spec: <LOQ%
Daminozide	LOQ: 1.00 PPM	Spec: <LOQ%	Quintozene	LOQ: 1.00 PPM	Spec: <LOQ%
Dimethomorph	LOQ: 1.00 PPM	Spec: <LOQ%	Spinetoram	LOQ: 1.00 PPM	Spec: <LOQ%
Etoxazole	LOQ: 1.00 PPM	Spec: <LOQ%	Spinosad	LOQ: 1.00 PPM	Spec: <LOQ%
Fenhexamid	LOQ: 1.00 PPM	Spec: <LOQ%	Spirotetramat	LOQ: 1.00 PPM	Spec: <LOQ%
Fonicamid	LOQ: 1.00 PPM	Spec: <LOQ%	Thiamethoxam	LOQ: 1.00 PPM	Spec: <LOQ%